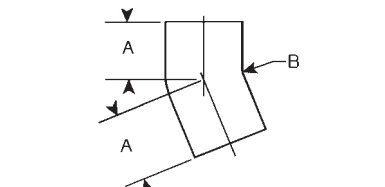
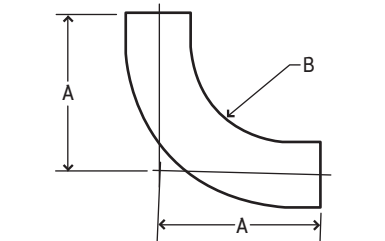
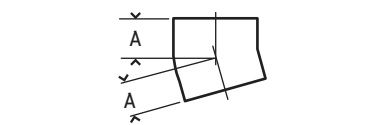
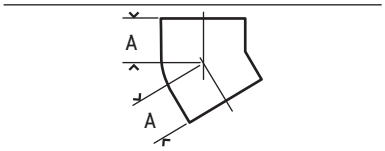
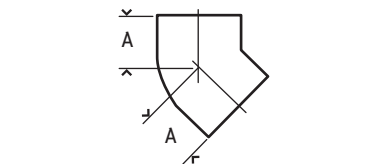
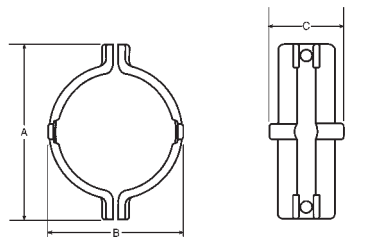
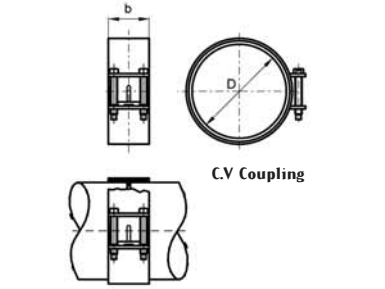
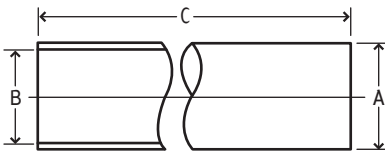


Halifax drain pipes & fittings



double spigot pipe

Product Code	Dia	A Max (O/dia)	B Min (I/dia)	Length C (mm)	Nom (Wt kg)
HD4001	100	112	97.5	3000	29.7
HD6001	150	162	146.25	3000	45.2
HD8001	200	212.5	195	3000	71.2
HD10001	250	276.5	243.75	3000	99.8
HD12001	300	328.5	292.5	3000	129.7

stainless steel coupling

Product Code	Dia	D	B	Max Torque (Nm)
HD4002	100	114	54	8
HD6002	150	164	65	8
HD8002	200	214	78	8
HD10002	250	278	78	15
HD12002	300	330	78	15

ductile iron coupling

Product Code	Dia	A	B	C	Nominal (Wt/kg)
HD4012	100	172	132	73	1.1
HD6012	150	223	180	95	2.0
HD8012	200	283	240	95	3.3

45 deg short radius bend

Product Code	Dia	A	Nominal (Wt/kg)
HD4005	100	70	1.6
HD6005	150	90	3.6
HD8005	200	110	6.4
HD10005	250	130	11.0
HD12005	300	150	18.5

30 deg short radius bend

Product Code	Dia	A	Nominal (Wt/kg)
HD4006	100	60	1.4
HD6006	150	80	3.2

15 deg short radius bend

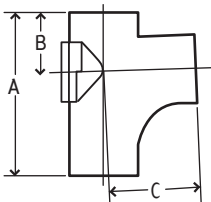
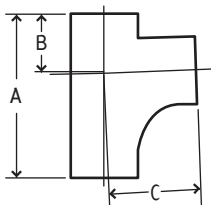
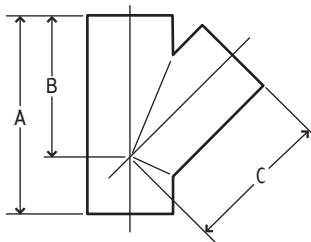
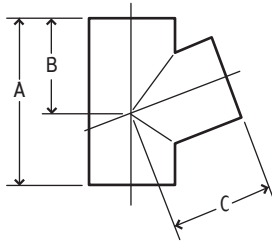
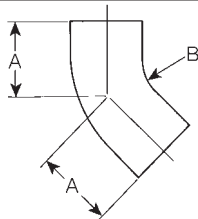
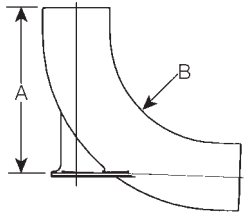
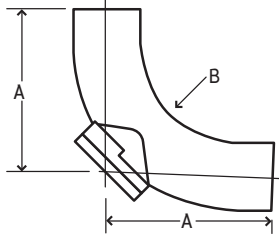
Product Code	Dia	A	Nominal (Wt/kg)
HD4007	100	50	1.2
HD6007	150	65	2.5

88 deg long radius bend

Product Code	Dia	A	B	Nominal (Wt/kg)
HD4008	100	269	180	5.3
HD6008	150	274	150	10.7

22 deg long radius bend

Product Code	Dia	A	B	Nominal (Wt/kg)
HD4009	100	90	180	2.2



88 deg long radius bend - back door

Product Code	Dia	A	B	Nominal (Wt/kg)
HD4011	100	269	180	7.3
HD6011	150	274	150	12.7

88 deg long radius bend - heel rest

Product Code	Dia	A	B	Nominal (Wt/kg)
HD4014	100	269	180	5.5
HD6014	150	274	150	11.4

45 deg medium radius bend

Product Code	Dia	A	B	Nominal (Wt/kg)
HD4015	100	135	150	3.5
HD6015	150	145	150	6.2

69 deg single equal and unequal branch

Product Code	Dia	A	B	C	Nominal (Wt/kg)
HD4025	100x100	215	130	130	3.4
HD6023	150x100	235	150	155	4.9

45 deg single equal and unequal branch

Product Code	Dia	A	B	C	Nominal (Wt/kg)
HD4028	100x100	260	190	190	4.3
HD6026	150x100	280	225	225	5.8
HD6027	150x150	355	265	265	10.2
HD8026	200x100	300	260	260	9.1
HD8027	200x150	375	300	300	13.2
HD8028	200x200	455	340	340	16.8
HD10028	250x250	560	430	430	32.0
HD12028	300x300	665	520	520	54.0

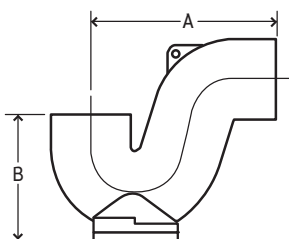
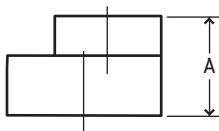
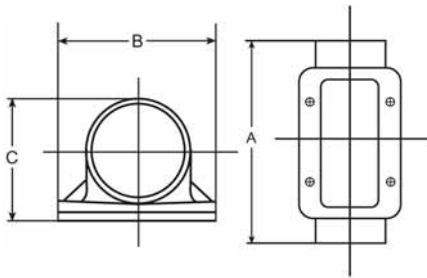
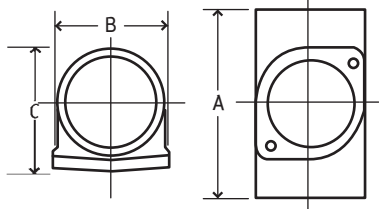
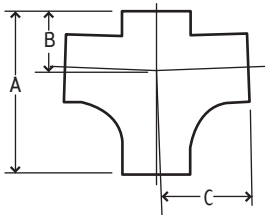
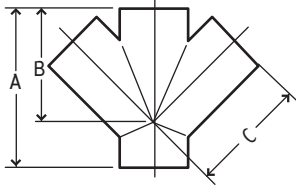
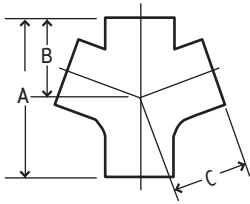
88 deg single branch - radius curve

Product Code	Dia	A	B	C	Nominal (Wt/kg)
HD4030	100x100	260	102	150	4.1
HD6030	150x100	305	115	202	6.5
HD6031	150x150	400	135	260	11.7

88 deg single branch - radius curve - with access

Product Code	Dia	A	B	C	Nominal (Wt/kg)
HD4032	100x100	270	102	150	5.4
HD6032	150x100	300	115	202	9.5
HD6033	150x150	400	140	260	14.2

Halifax drain pipes & fittings



69 deg double branch

Product Code	Dia	A	B	C	Nominal (Wt/kg)
HD4035	100x100	215	130	130	4.1

45 deg double branch

Product Code	Dia	A	B	C	Nominal (Wt/kg)
HD4036	100x100	260	190	190	5.7
HD6036	150x100	280	225	225	6.5
HD6037	150x150	355	265	265	11.7
HD8036	200x200	455	340	340	21.0

88 deg double branch - radius curve

Product Code	Dia	A	B	C	Nominal (Wt/kg)
HD4038	100x100	270	102	150	5.3
HD6038	150x100	300	115	200	8.2

access pipe - round door

Product Code	Dia	A	B	C	Nominal (Wt/kg)
HD4043	100	250	118	130	4.3
HD6043	150	280	172	180	7.9

access pipe - rectangular door

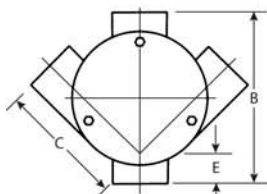
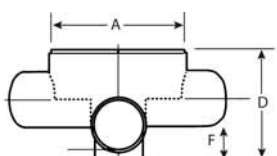
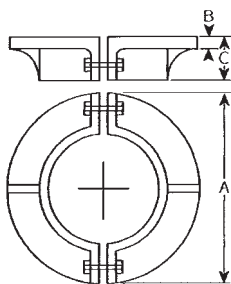
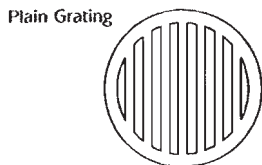
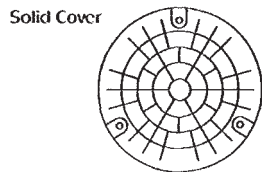
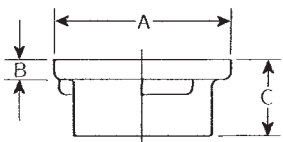
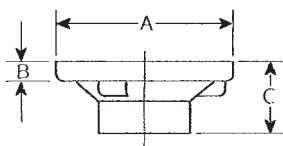
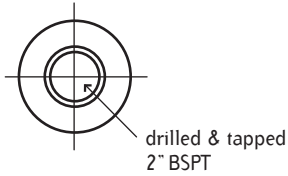
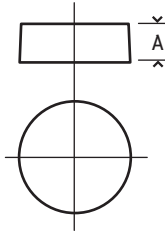
Product Code	Dia	A	B	C	Nominal (Wt/kg)
HD4049	100	320	160	129	7.2
HD6049	150	395	215	184	13.5
HD8049	200	465	260	232	22.0
HD10049	250	535	335	300	37.5
HD12049	300	605	385	350	50.0

pipe taper

Product Code	Dia	A	Nominal (Wt/kg)
HD6048	150x100	102	2.4
HD8046	200x100	115	4.0
HD8047	200x150	125	4.0
HD10046	250x100	125	5.5
HD10047	250x150	130	6.3
HD10048	250x200	140	6.5
HD12046	300x150	146	9.9
HD12047	300x200	160	10.1
HD12048	300x250	172	12.2

trap - with bottom access

Product Code	Dia	A	B	Nominal (Wt/kg)
HD4050	100	255	175	6.8
HD6050	150	350	245	15.8



blank end

Product Code	Dia	A	Nominal (Wt/kg)
HD4051	100	40	0.8
HD6051	150	50	1.6
HD8051	200	60	2.9
HD10051	250	70	5.7
HD12051	300	80	10.1

blank end - drilled and tapped

Product Code	Dia	A	Nominal (Wt/kg)
HD4052	100	40	0.7
HD6052	150	50	1.5

bellmouth gully inlet

Product Code	Dia	A	B	C	Nominal (Wt/kg)
HD4070	100	215	25	85	2.4

gully inlet

Product Code	Dia	A	B	C	Nominal (Wt/kg)
HD6071	150	215	22	95	2.9

solid cover

Product Code	Dia	Nominal (Wt/kg)
HD8076	200	2.0

Supplied with rubber seal + screws fitted

plain grating

Product Code	Dia	Nominal (Wt/kg)
HD8077	200	1.8

puddle flange

Product Code	Dia	A	B	C	Nominal (Wt/kg)
HD4078	100	220	12	50	4.0
HD6078	150	275	12	65	6.0
HD8078	200	315	12	70	7.0
HD10078	250	405	12	70	11.0
HD12078	300	450	12	80	13.0

Bolt on flange is supplied in two halves with stainless steel nuts and bolts.

Designed to be bedded on "Denso" tape or similar wrapped around the pipe to provide a water tight seal.

inspection chamber

Product Code	Dia	A	B	C	D	E	F	Nominal (Wt/kg)
HD4480	100x100	275	375	290	240	72	66	15.9
HD6680	150x150	275	415	317	310	126	92	19.4

Supplied with 275mm diameter removable cover for ease of maintenance.