

Halifax soil to below ground clayware

Halifax can be connected to a clay or earthenware socket using a traditional cement joint. When connecting to Supersleve use the appropriate adaptor coupling by Hepworth

PVC above ground soil systems

100mm & 150mm Halifax to PVC may be connected by utilising either our HS4002 & HS6002 couplings or the new ductile iron couplings HS4012 & HS6012.

Conventional C.I. soil/drain

To connect Halifax into a conventional soil or drain socket use a traditional caulked joint.

Halifax manifold connector

This multi-waste connector allows up to 3 waste pipes from various appliances e.g. sinks, basins and showers to be connected at a single internal point above finished floor level.

The rubber grommets in the manifold connector can accept 32 & 40mm plastic or 35 and 42mm copper.

See Image 'Halifax Manifold Connector' **1**

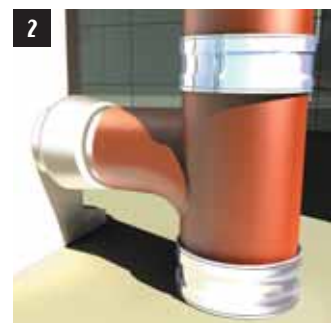
Sanitary ware / waste connections

The Halifax system accepts Multikwik and similar WC connectors and the Boss pipe accepts both plastic and copper standard connections.

See images Multikwik **2** and Boss pipe **3**

Roof outlets / floor drains

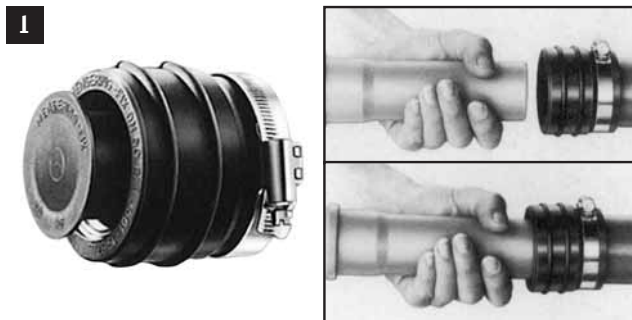
In most cases our standard couplings will connect directly onto the majority of products available on the market, but if in doubt, contact us to check on compatibility.



1 Halifax fix

Reducing connector for jointing pipes of unequal diameter or dissimilar material;

- Manufactured to DIN 4060 for use up to 0.5 Bar internal pressure
- No noise transmission from pipe to pipe
- Supplied with protective cap and two closure seals
- Closure ring in EPDM rubber
- Hose clip made of stainless steel 1.4016
- Slotted hexagon head locking screw
- Lubricant should be used during assembly.



2 Halifax soil boss pipes

Halifax boss pipes in dia's 70 to 150mm with 2 inch BSPT to accept male iron waste adaptors to plastic or copper.

- Cast iron fittings manufactured to BS EN 877
- 2 inch BSPT thread
- Single bossed pipe
- Double bossed at 90 degrees and double bossed opposed pipes

Halifax soil blank end

- Available in various diameters drilled and tapped 2 inch BSPT for connection to branches or pipe ends.